

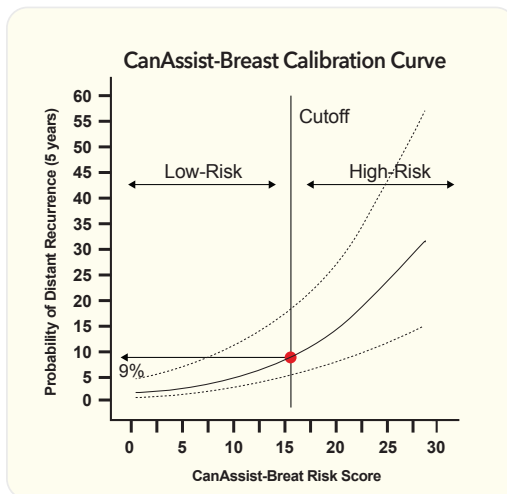
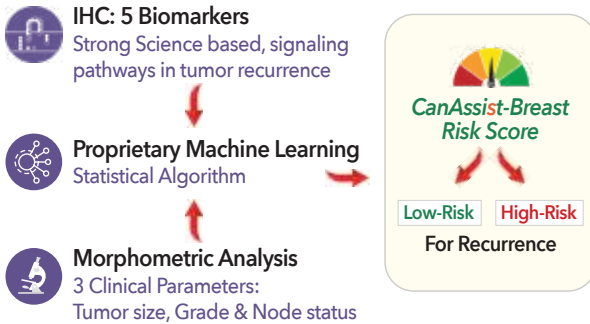
*Don't worry about
cancer recurrence!*

We can assist with CanAssist

CanAssist-Breast
redefining cancer treatment

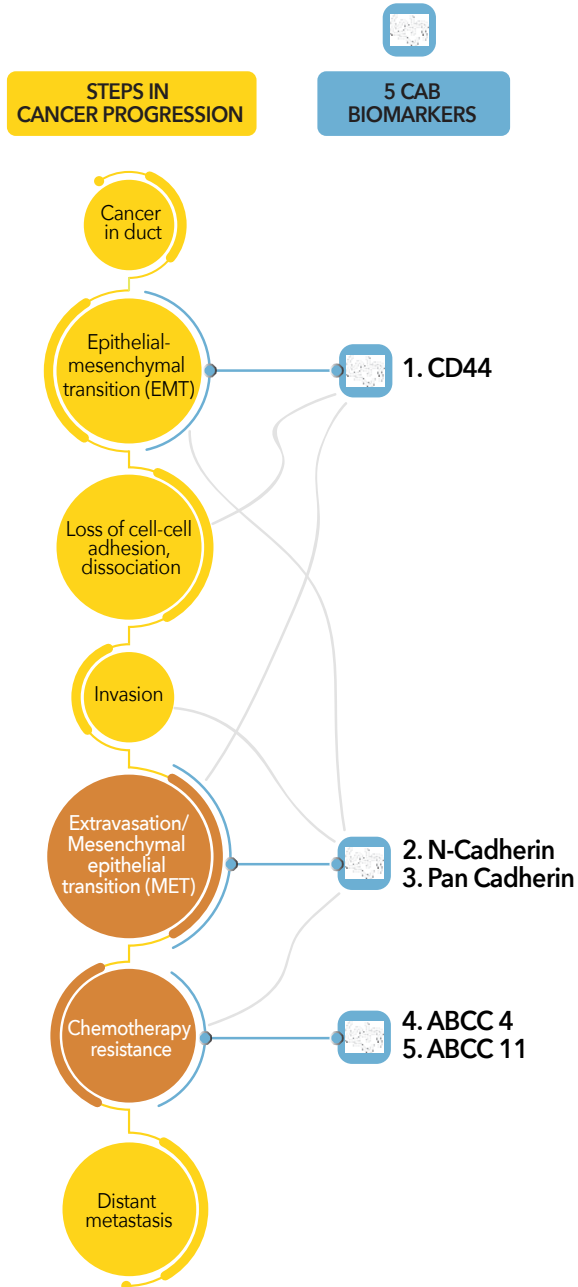
Risk Prediction using *CanAssist-Breast*

Machine learning-based test that stratifies breast cancer patients based on risk of recurrence. CanAssist-Breast integrates IHC data and clinical parameters into a statistical algorithm which provides CanAssist-Breast (CAB) score that stratifies patients as “low-risk” or “high-risk” for distant recurrence over 5 years

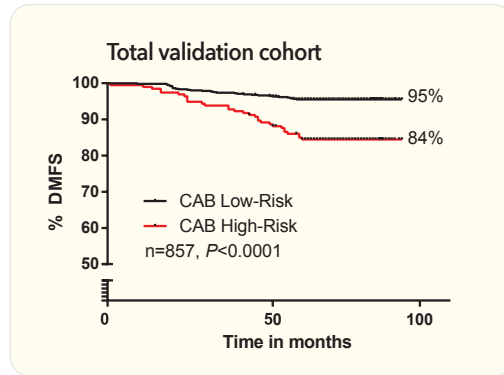


CanAssist-Breast Risk Scores are directly proportional to probability of distant recurrence. The CanAssist-Breast Risk Score cut-off of 15.5 corresponds to a 9% probability of distant recurrence

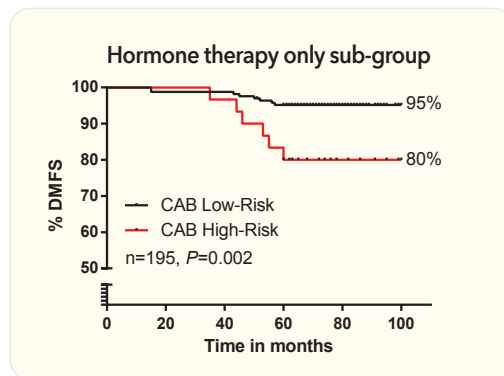
CanAssist-Breast assesses expression of unique biomarkers that play critical roles in metastasis



Risk Stratification Using CanAssist-Breast



- CanAssist-Breast identifies distinct groups of low-risk and high-risk patients in Kaplan-Meier survival analysis
- The low-risk group has <5% rate of distant recurrence

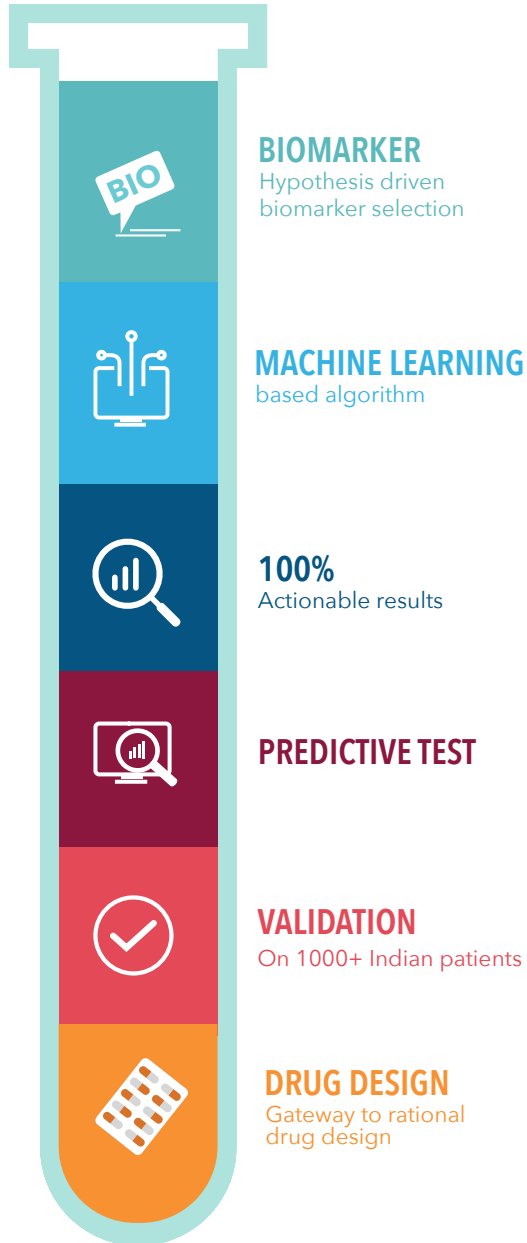


- CanAssist-Breast is significantly prognostic in a cohort treated with endocrine therapy alone
- Validation in endocrine therapy alone treated cohort gives you the confidence that CAB provides accurate risk predictions

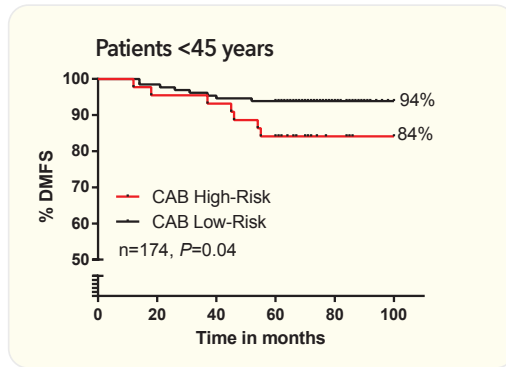
**CanAssist-Breast is a significant
predictor of prognosis**

Novelty: CanAssist-Breast Test

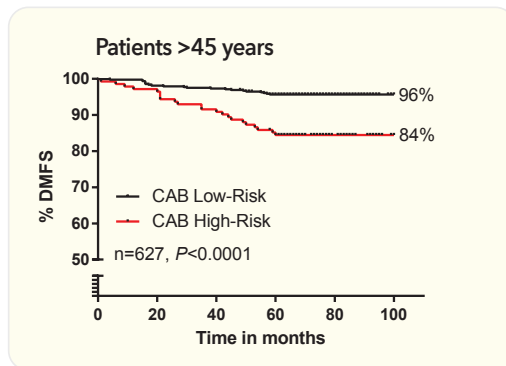
CanAssist-Breast



CanAssist-Breast is prognostic in younger patients



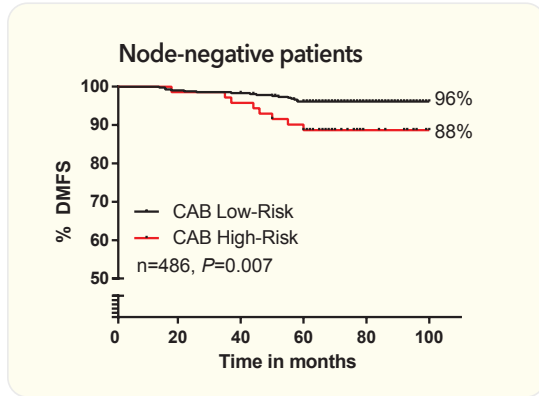
- CanAssist-Breast has been validated on patients across all age groups
- It can stratify younger patients into low-risk and high-risk groups as effectively as it can stratify older patients.
- This is important because the mean age of diagnosis of breast cancer in Asia is a decade earlier than the West



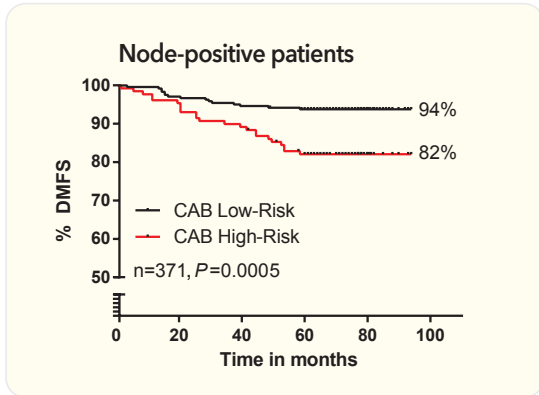
CanAssist-Breast is an independent predictor of prognosis

Covariate	Hazard ratio	p-value	95% CI
Age	1.55	0.09	0.92-2.61
ER	1.12	0.75	0.55-2.25
PR	1.67	0.04	1.0-2.80
CT treatment	1.38	0.30	0.74-2.58
CanAssist-Breast risk score	3.39	<0.0001	2.05-5.61

CanAssist-Breast is prognostic independent of node status

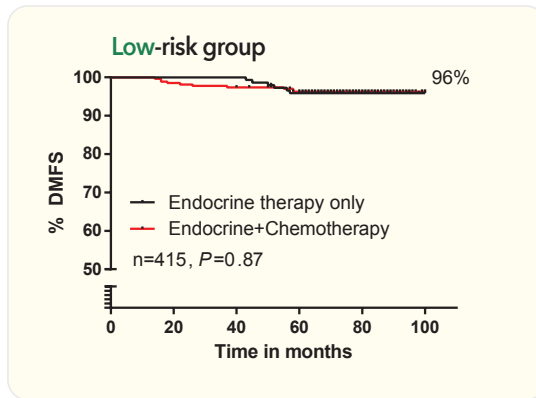


- 5-year distant recurrence was <4% for low-risk patients

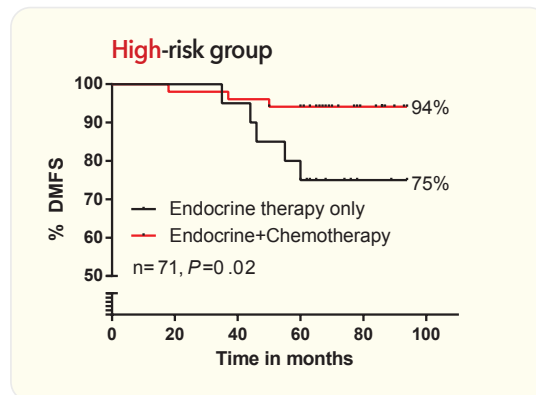


- 65% of node-positive patients- a population that routinely receives chemotherapy- were classified as low-risk by CAB and had recurrence rates <6%

CanAssist-Breast is predictive of “Chemotherapy Benefit”

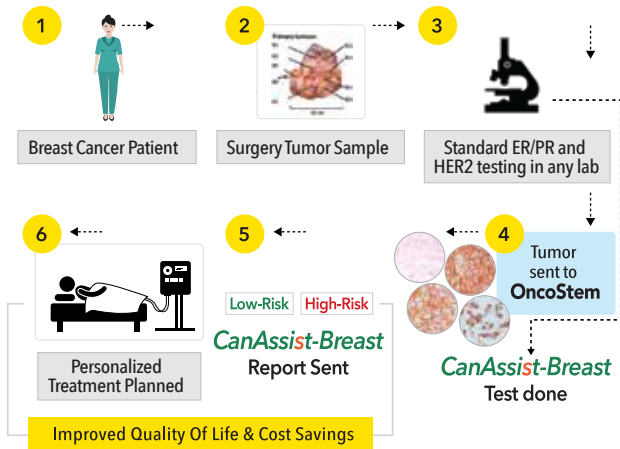


- No difference in DMFS for low-risk patients who are given adjuvant chemotherapy plus endocrine therapy vs those given only endocrine therapy
- Insignificant benefit from chemotherapy to patients called low-risk by CanAssist-Breast

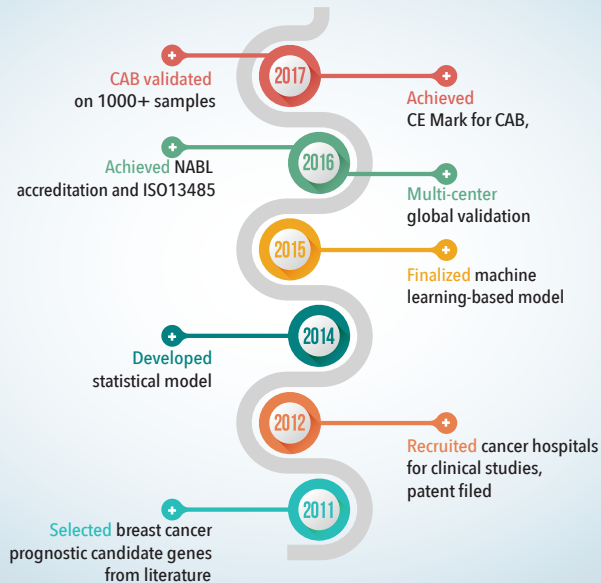


- CAB provides 19% chemotherapy benefit for high-risk patients who take adjuvant chemotherapy plus endocrine therapy vs those who take only endocrine therapy

Workflow of CanAssist-Breast Breast Testing



CanAssist-Breast: Development Timeline



OncoStem Diagnostics performs immunohistochemical (IHC) testing as per standard guidelines for

- 1) Estrogen Receptor (ER)
- 2) Progesterone Receptor (PR)
- 3) HER2/neu
- 4) Ki67

OncoStem's laboratory is NABL accredited for IHC testing of the above-mentioned prognostic markers. OncoStem also regularly participates in External Quality Assurance Schemes (EQAS) including CAP Proficiency Testing.

OncoStem Diagnostics Pvt Ltd

4, Raja Ram Mohan Roy Road,
Anand Tower, 2nd Floor, South wing,
Bangalore 560027

+91 96866 96505

+91 80 2224 0034

info@oncostemdiagnostics.com

www.oncostemdiagnostics.com

